

## 3D model of victims body



m99

<https://0x8.ch/HackersCardgame22>

**Inventor: xxxxxx**  
**Year: ~????**  
 Like the m98 Card they seem to have also a 3D model of my body, most likely generated from a RetinaCCD (eye1) and they also add eventtriggers (t14) that then eg activates electronic psychological warfare, eg chains like co6 → m32 → m94 → m44 → m93.

Not yet found out how to workaround that problem, i will update this card when i found out, and maybe make some videos to explain.

This card seems to have several DEFCON Level

If i say: "5Shrink now asked his mummy for help" the algorithm gets more worse, additional it seems that the System or Project Paperclip then gives out more informations about the complete domain model of the alleged infiltration of switzerland, maybe to obfuscate the 1940s neurology classes? "Chemitrode gesicht" \*icd10.44x\* <-

## 3D model of victims body



m99

<https://0x8.ch/HackersCardgame22>

**Inventor: xxxxxx**  
**Year: ~????**  
 Like the m98 Card they seem to have also a 3D model of my body, most likely generated from a RetinaCCD (eye1) and they also add eventtriggers (t14) that then eg activates electronic psychological warfare, eg chains like co6 → m32 → m94 → m44 → m93.

Not yet found out how to workaround that problem, i will update this card when i found out, and maybe make some videos to explain.

This card seems to have several DEFCON Level

If i say: "5Shrink now asked his mummy for help" the algorithm gets more worse, additional it seems that the System or Project Paperclip then gives out more informations about the complete domain model of the alleged infiltration of switzerland, maybe to obfuscate the 1940s neurology classes? "Chemitrode gesicht" \*icd10.44x\* <-

## Body Telemetry Motion Capture



t53

<https://0x8.ch/HackersCardgame22>

**Inventor: ????**  
**Year: ~xxxx**  
 Normally when TV talks about Motion Capture they show Motion Capture with pattern recognition software and cams. But one could do this also with gyro-sensors, with RFID's, with LC-Circuits with different frequencies, metal detector, radar, naked scanners..... This image is from <https://hackaday.com/2016/09/13/bewegungsfelder-is-a-wireless-imu-motion-capturing-system/>

And as in m41 we might add: **we are not worthy**



## Body Telemetry Motion Capture

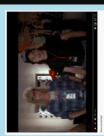


t53

<https://0x8.ch/HackersCardgame22>

**Inventor: ????**  
**Year: ~xxxx**  
 Normally when TV talks about Motion Capture they show Motion Capture with pattern recognition software and cams. But one could do this also with gyro-sensors, with RFID's, with LC-Circuits with different frequencies, metal detector, radar, naked scanners..... This image is from <https://hackaday.com/2016/09/13/bewegungsfelder-is-a-wireless-imu-motion-capturing-system/>

And as in m41 we might add: **we are not worthy**



## 3D model of victims apartment



m98

<https://0x8.ch/HackersCardgame22>

**Inventor: xxxxxx**  
**Year: ~????**  
 They have some sort of a 3D Model of victims, whistleblowers, whitehat hackers, Lab Rats, Verdingkinder apartment where they can set eventtriggers (t14) or even create an at1 out of their victim. Generated from eg, RetinaCCD (eye1, a19, Photogrammetry) or body telemetry (RFID in extremities) or an older system like resonant circuits. Maybe a persons position could also be extrapolated just from acoustic data, for example if you have more than 2 Laptops with microphone (see IEEE1588) and a model of the apartment. They have also access to my amygdala implant (b1) and at the same time triggering cAPI (d3) programmed in 2002 with something like c12, t2, t7, t32 card. The Apartment was selected by SherFamily in 2002 (interactive, bidirectional, almost killed me), I guess they are testing new systems, new socio-psychological design-patterns, new CyberWar equipment / patterns. They seem to use Loops to "hide" things even police is affected: they did not "saw" a laptop that was obvious on the table, they also "hide" wound care material, and that is really

## 3D model of victims apartment



m98

<https://0x8.ch/HackersCardgame22>

**Inventor: xxxxxx**  
**Year: ~????**  
 They have some sort of a 3D Model of victims, whistleblowers, whitehat hackers, Lab Rats, Verdingkinder apartment where they can set eventtriggers (t14) or even create an at1 out of their victim. Generated from eg, RetinaCCD (eye1, a19, Photogrammetry) or body telemetry (RFID in extremities) or an older system like resonant circuits. Maybe a persons position could also be extrapolated just from acoustic data, for example if you have more than 2 Laptops with microphone (see IEEE1588) and a model of the apartment. They have also access to my amygdala implant (b1) and at the same time triggering cAPI (d3) programmed in 2002 with something like c12, t2, t7, t32 card. The Apartment was selected by SherFamily in 2002 (interactive, bidirectional, almost killed me), I guess they are testing new systems, new socio-psychological design-patterns, new CyberWar equipment / patterns. They seem to use Loops to "hide" things even police is affected: they did not "saw" a laptop that was obvious on the table, they also "hide" wound care material, and that is really

## Object Recognition based on Action Recognition



t53

<https://0x8.ch/HackersCardgame22>

**Inventor: ????**  
**Year: ~xxxx**  
 One can identify the action with cams PatternRecognition of a certain period of time  
**Pseudo Formula:**  
 actionRecog = patternRecog(t)  
 based on that data one could identify objects, since many actions can be done only with certain objects.  
**Pseudo Formula:**  
 actionRecog, € Objekt,

Eg. pulling over a pullover, normally identifies the action, but if you have a camera that can identify only one could identify may objects without having a cam but only with spectral data of WiFi (Tensors) to recognize it or with FITBit, Bewegungsfelder. Then add it to the 3D Model (m98/m99). It would take maybe a month but you could identify maybe almost everything in a period of a month? That's maybe how they know what children do in their bed, we as a community should mitigate that if we can verify that.

## Object Recognition based on Action Recognition



t53

<https://0x8.ch/HackersCardgame22>

**Inventor: ????**  
**Year: ~xxxx**  
 One can identify the action with cams PatternRecognition of a certain period of time  
**Pseudo Formula:**  
 actionRecog = patternRecog(t)  
 based on that data one could identify objects, since many actions can be done only with certain objects.  
**Pseudo Formula:**  
 actionRecog, € Objekt,

Eg. pulling over a pullover, normally identifies the action, but if you have a camera that can identify only one could identify may objects without having a cam but only with spectral data of WiFi (Tensors) to recognize it or with FITBit, Bewegungsfelder. Then add it to the 3D Model (m98/m99). It would take maybe a month but you could identify maybe almost everything in a period of a month? That's maybe how they know what children do in their bed, we as a community should mitigate that if we can verify that.