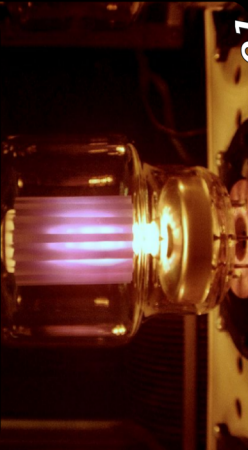


Vacuum Tube Electron Tube



e1

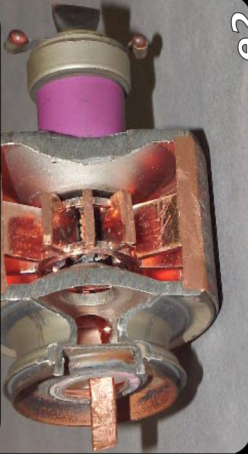
<https://0x8.ch/HackersCardgame23>

Inventor: **Frederick Guthrie** **Year:** ~1873

A vacuum tube or valve (Britain and some other regions), is a device that controls electric current between electrodes in an evacuated container. Vacuum tubes mostly rely on thermionic emission of electrons from a hot filament or a cathode heated by the filament. This type is called a thermionic tube or thermionic valve. Not all electronic circuit valves/electron tubes are vacuum tubes (evacuated); gas-filled tubes are similar devices containing a gas, typically at low pressure

As a Transistor today used for high frequency and high power amplifiers like radio stations

Cavity magnetron



e2

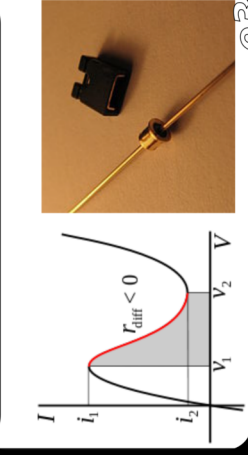
<https://0x8.ch/HackersCardgame23>

Inventor: **H. Gerdien** **Year:** ~1910

The cavity magnetron is a high-powered vacuum tube that generates microwaves using the interaction of a stream of electrons with a magnetic field while moving past a series of open metal cavities (cavity resonators). Electrons pass by the openings to these cavities and cause radio waves to oscillate within, similar to the way a guitar resonates sound from its sound box via the oscillation of its strings. see also t15 card

For Microwave Oven but unfortunately also for things like Active Denial Systems (Another Card)

Tunnel Diode ESAKI Diode



e3

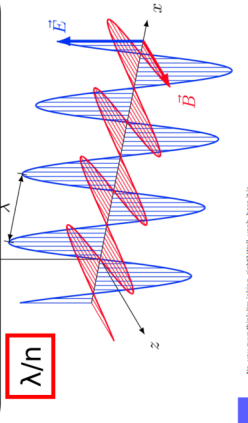
<https://0x8.ch/HackersCardgame23>

Inventor: **Leo Esaki** **Year:** ~1957

A tunnel diode or Esaki diode is a type of semiconductor that is capable of very fast operation, Operates in microwave frequencies, quantum mechanical effect called tunneling.

Like an Electrone Tube, to create High Frequencies / Oscillators. One could maybe integrate his also in CPU's or other electronic components.

ANTENNA



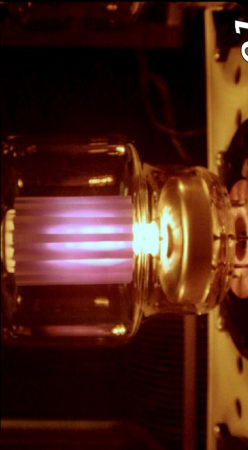
<https://0x8.ch/HackersCardgame23>

Inventor: **xxxxx** **Year:** ~????

Antenna Shapes can be defined through their Wavelength or the multiples and divisors of their λ (greek letter Lambda):

The frequencies of antennas can be calculated. A golden wire in the body would have also a specific frequency and could contract muscles. The only legitimate experiment would be a self-experiment and only if under medical surveillance. This would also mean that Elon Musks Neuralink is possibly prone to side band attacks directly to the wires of the implant.

Multiple Sensors



e5

<https://0x8.ch/HackersCardgame23>

Inventor: **xxxxx** **Year:** ~????

<https://hackaday.com/2017/05/19/sense-all-the-things-with-a-synthetic-sensor> This Sensor can detect light, Infrared, Electromagnetism (x,y,z), Temperature, Sound... and it has synthetic sensor (calculated dy(n)/dt) those things will then matched to a matrix of learned events. So it can detect for example that you enabled the microwave oven (Electromagnetism && Sound of the fan that cools down the Magnetron), unfortunately Satan can also detect if a innocent girl uses her private epilator. If it is enabled and disabled over a period more than 10 minutes. It would be likely they then add pedophile old ugly people to her / his stream non-consensually because this is normally a vulnerable phase where Satan would like to abuse this weakness.

Forensic disk-drive-controller



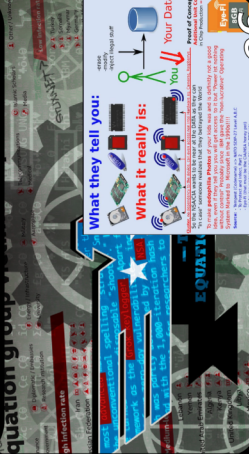
e7

<https://0x8.ch/HackersCardgame23>

Inventor: **xxxxx** **Year:** ~????

If HardDisk is infected with Equation Group Malware or worse if disk has an additional wireless channel you can forget about that. Secret Secret Services would delete evidence that prove their crimes as soon as disk would be attached and maybe add some illegal false tracks like child porn.

Equation Group Malware / Built-in



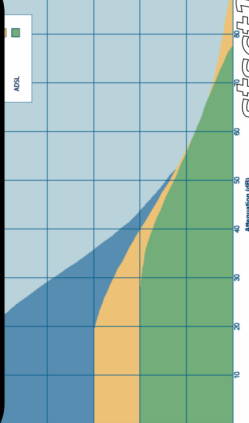
e6

<https://0x8.ch/HackersCardgame23>

Inventor: **xxxxx** **Year:** ~????

Equation Group malware or even Built-in is a customized firmware for Harddrives and SolidStateDrives. They publicly said that it is "just" some malware to reinfect your computer after you reinstalled your operating system. In my humble opinion it has also some remote interface like the **eyefi SD** Card has, technical some sort of AX.25 interface (up to 8 Miles) but way more modern. And one of those things the seed to the public and those people that ask questions, tweet to the Hashtag #EquationGroup would end up the 11th time in a Mental Institution. (see m138, m124 Card) **Further research required...**

UNUSED FREQUENCIES



e7

<https://0x8.ch/HackersCardgame23>

Inventor: **xxxxx** **Year:** ~????

If the agencies like NSA/CIA are only 5 Years ahead of the consumer market, they can easily hide unseen Transport Streams in the higher frequencies, here BINS (xDSL) but also in DVB-x or in Docsis.