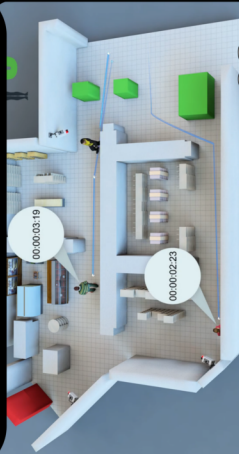


3D model of behavioral prediction



<https://0x8.ch/HackersCardgame23> **m98e**

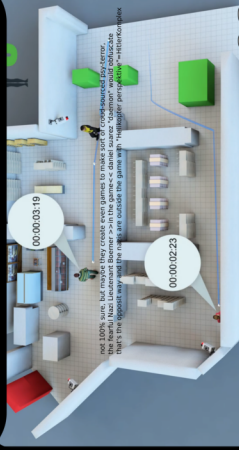
Inventor: xxxxx
Year: ~????
After a while they adapt behavior in my apartment but also in stores. **Behavioral prediction** but also things like **cell tracking**

They then try to stop me from doing work that would maybe leak another dirty move of satans terror-network.

Another annoying thing is, that they have some sort of **sequence randomizer** that tries to force me to wash my hands first and then handle things that are potentially infected with corona...



3D model of victims apartment



<https://0x8.ch/HackersCardgame23> **m98**

Inventor: xxxxx
Year: ~????
They have some sort of a 3D Model of victims, whistleblowers, whitehat hackers, Lab Rats, Verdingkinder apartment where they can set eventtriggers (t14) or even create an at1 out of their victim. Generated from eg. RetinaCCD (eye1, a19, Photogrammetry) or body telemetry (RFID in extremities) or an older system like resonant circuits. Maybe a persons position could also be extrapolated just from acoustic data, for example if you have more than 2 Laptops with microphone (see IEEE1588) and a model of the apartment. They have also access to my amygdala implant (b1) and at the same time triggering cAPI (dt3) programmed in 2002 with something like c12, t2, t7, t32 card. The Apartment was selected by sherfamily in 2002 (interactive, bidirectional, almost killed me). I guess they are testing new systems, new socio-psychological design-patterns, new CyberWar equipment / patterns. They seem to use loops to 'hide' things even police is affected: they did not 'saw' a laptop that was obvious on the table, they also 'hide' 'wound care material, and that is really



3D model of victims body



<https://0x8.ch/HackersCardgame23> **m99**

Inventor: xxxxx
Year: ~????
Like the m98 Card they seem to have also a 3D model of my body, most likely generated from a RetinaCCD (eye1) and they also add eventtriggers (t14) that then eg activates electronic psychological warfare, eg chains like co6 => m32 => m94 => m44 => m93.

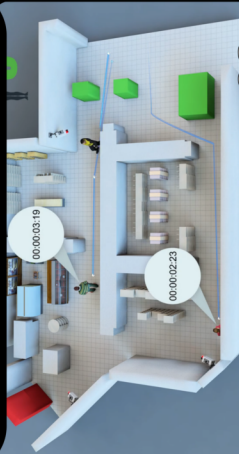
Not yet found out how to workaround that problem, i will update this card when i found out, and maybe make some videos to explain.

This card seems to have several DEFCON Level

if i say: "\$Shrink now asked his mummy for help" the algorithm gets more worse, additional it seems that the System or Project Paperclip then gives out more informations about the complete domin model of the alleged infiltration of switzerland, maybe to obfuscate the 1940s neurology classes? "Chemitrode gesicht*" rcd10-f44x* <-



Admin = GOD?



<https://0x8.ch/HackersCardgame23> **m98e**

Inventor: xxxxx
Year: ~????
The existence of a **omnipotent Administrator**, especially if the **Mainframe** controls the whole world would / will destroy all beliefs: **belief in God**, belief in faith, belief in Religion, belief in beeing of use for anything

Another annoying thing is, that they have some sort of **sequence randomizer** that tries to force me to wash my hands first and then handle things that are potentially infected with corona...

They then try to stop me from doing work that would maybe leak another dirty move of satans terror-network.



Admin = GOD?

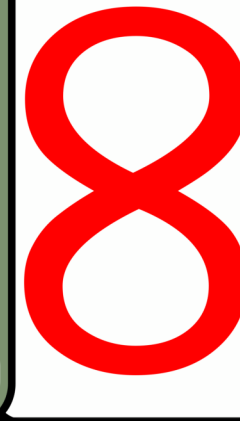


<https://0x8.ch/HackersCardgame23> **philo1**

Inventor: xxxxx
Year: ~????
The existence of a **omnipotent Administrator**, especially if the **Mainframe** controls the whole world would / will destroy all beliefs: **belief in God**, belief in faith, belief in Religion, belief in beeing of use for anything



eternal life



<https://0x8.ch/HackersCardgame23> **philo2**

Inventor: xxxxx
Year: ~????
To promise **eternal life** would be a bad thing, better **do what you can do** aslong as you are alive, otherwise you would just be frustrated when life is about to end and you could not finish your lifetime Achievement.



3D model of victims body



<https://0x8.ch/HackersCardgame23> **m99**

Inventor: xxxxx
Year: ~????
Like the m98 Card they seem to have also a 3D model of my body, most likely generated from a RetinaCCD (eye1) and they also add eventtriggers (t14) that then eg activates electronic psychological warfare, eg chains like co6 => m32 => m94 => m44 => m93.

Not yet found out how to workaround that problem, i will update this card when i found out, and maybe make some videos to explain.

This card seems to have several DEFCON Level

if i say: "\$Shrink now asked his mummy for help" the algorithm gets more worse, additional it seems that the System or Project Paperclip then gives out more informations about the complete domin model of the alleged infiltration of switzerland, maybe to obfuscate the 1940s neurology classes? "Chemitrode gesicht*" rcd10-f44x* <-



YOU are SCHIZOPHRENIC!



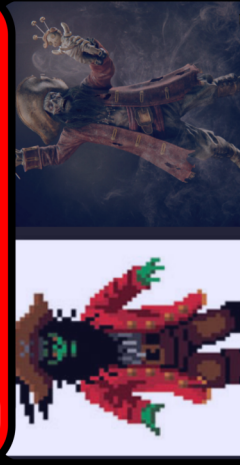
<https://0x8.ch/HackersCardgame23> **m9**

Inventor: Satan / Eugen Bleuler
Year: ~1908
N. Lat. : morbus dissidentiae phreneticae, also known as Bleuler's disease. Differential diagnoses: autism, developmental disorders, dissociative identity disorder (in passive), delirious (judging?) Depression, injuries, tumors in the brain, various forms of dementia, confusion, disorientation, psychotic states, Borderline Personality Disorder, random personality disorder, compulsive thoughts, pernicious anemia, induced disorder #MKULTRA.

Marc found strange behavior in the LAN in Allstetten (ABB,1999), he guessed this must be CIA footprinting / enumeration for world domination. They attack the 20 years old Marc with illegal drugs declared him schizophrenic(discriminate / discredit / isolate / planning / calling him a rapist. They did experiments with hum to force others to commit suicide, but thats not marcs fault)



Le Chuck



<https://0x8.ch/HackersCardgame23> **g1**

Role/Archetype
LeChuck has the role of the bad guy in the Lucas Arts Game Monkey Island™
This archetype is missing in C.G. Jungs Theory: "The older bad sibling"-Archetype, or something like a "evil father"-Archetype who often mistreat others. Or the role of an "always drunken father"-archetype. But in fact often the oldest children suffer the most pain, but a14 card maybe applies too
Wed Aug 7 2013:
[L] [L] Was ~~das~~ **Ami-der CIA** können, können wir schon Lange! Schaut mal, ein dreiköpfiger Terroristen-Affe!!! three-headed terrorist monkey! (Unheard: **focus on the three-headed monkey!**)



Assassin



<https://0x8.ch/HackersCardgame23> **at1**

Inventor: ????
Year: ~????
Islamophobe "christianist" Terrorist. Run amok against 77 innocent young victims. As far as i could find out he was some sort of a "home child", "Street child" where one can only speculate that he was formed to an assassin with eg. technology Cards+. His manifest was "symbol minded", so i guess that it was some sort of symbol language they used. Maybe combined with legal or illegal drugs, maybe only in the beginning to set the base stimulus-response-habits, if this hypothesis is true, then the people that planned to kill the 77 victims is still free and plans maybe the next assassination. And the chances to find evidence on his devices or the devices of his neighbours is quite small because those people would assassinate innocent people as a profession. Eaybe Epstein "customers" can be activated as Terrorists or more likely that they would use younger people to do such things, eg the equalaged partner of their victim(s) m38 -> co6 -> m44 or at1

